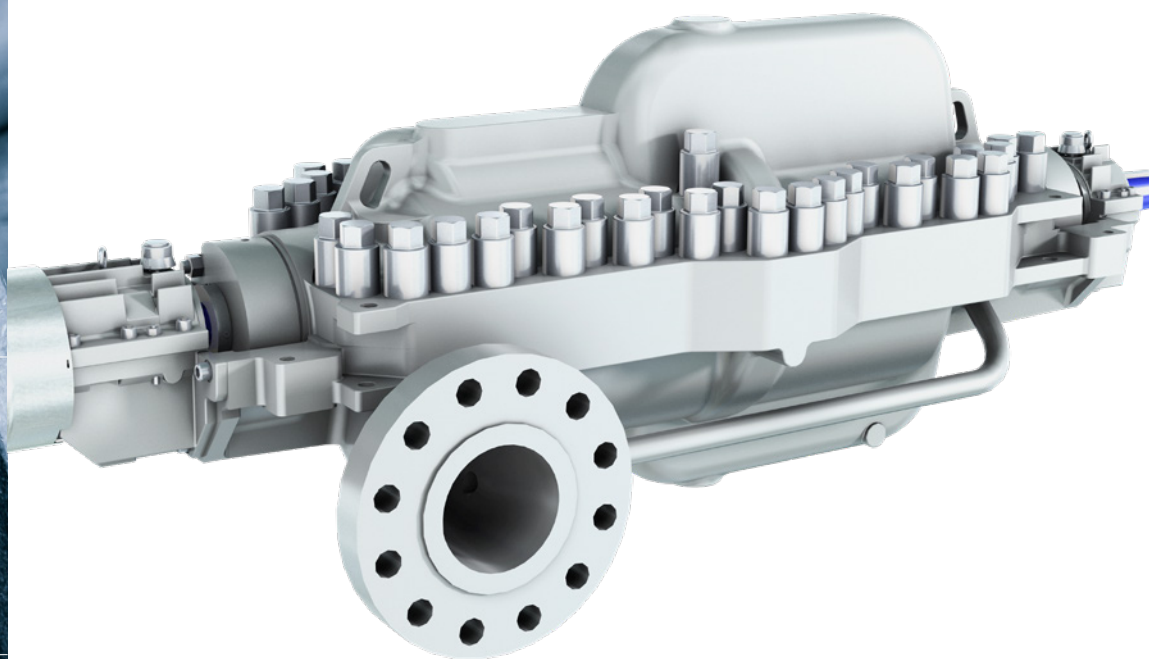


# SULZER

Flow Equipment

---

## MSD axially split multistage pump



# Main industries and applications

- Boiler feed in all industries; auxiliary feed in nuclear power
- Reverse osmosis feed
- Offshore crude oil shipping
- Refined product pipeline
- Supercritical Liquefied Petroleum Gas (LPG), Ethylene and CO<sub>2</sub> compressible services down to 0.25 sp.gr.



Oil and gas



Hydrocarbon processing



Power generation



Pulp, paper and board



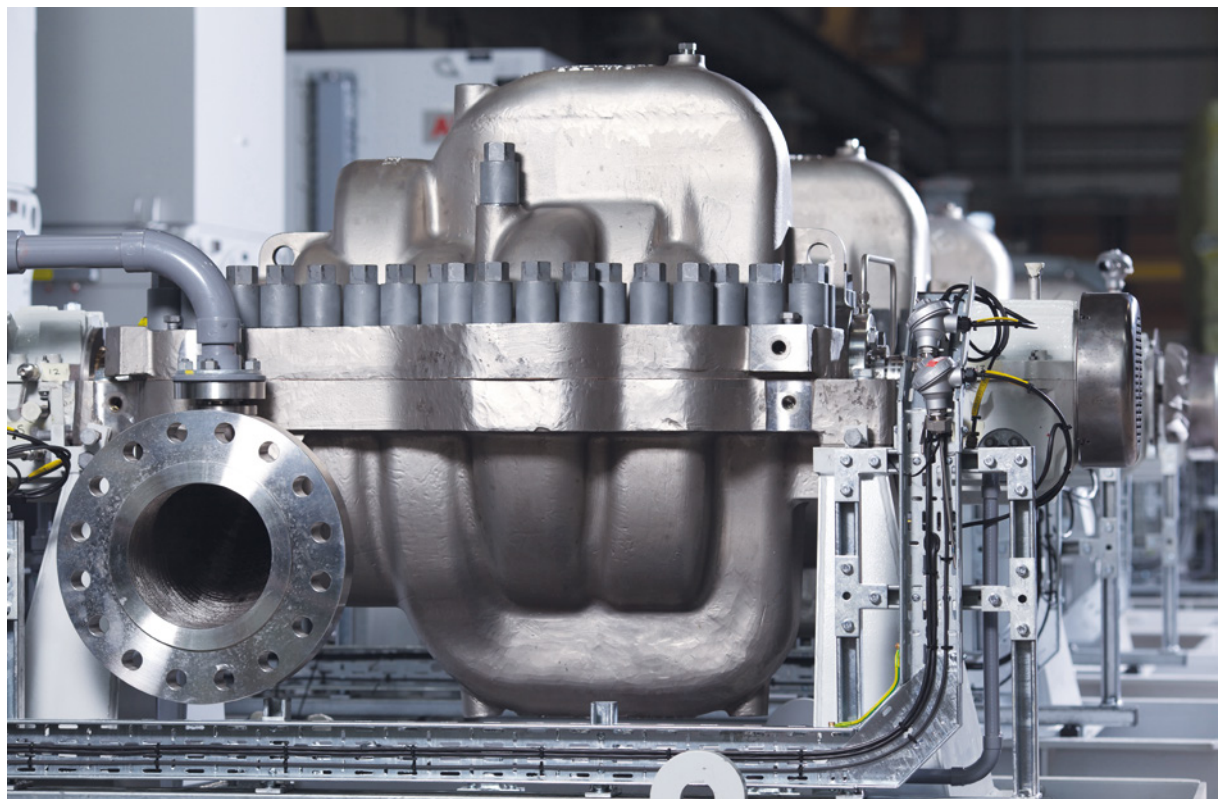
General industry



Chemical process industry



Water and wastewater



# Features and benefits

## 1 Impellers

- Shrink fit, precision cast, dynamically balanced and individually secured

## 2 Axially split casing

- Simplifies rotor balancing, inspection and installation, case passageway inspection and modification, and spare rotor retrofits
- Support is near centerline for alignment
- Full range of design pressures to suit applications

## 3 Large diameter shaft

- Stepped for ease of assembly
- Sized to satisfy rotor dynamics and power transmission with worn clearances
- Optimized for hydraulic performance

## 4 Double volute construction

- Minimum radial thrust for less shaft deflection and less bearing loading

## 5 Bearings

- Ball radial and 7300 series ball thrust bearings are standard; sleeve/ball and sleeve/pivot shoe bearings are optional. INPRO™ isolators are standard

## 6 Seal chambers

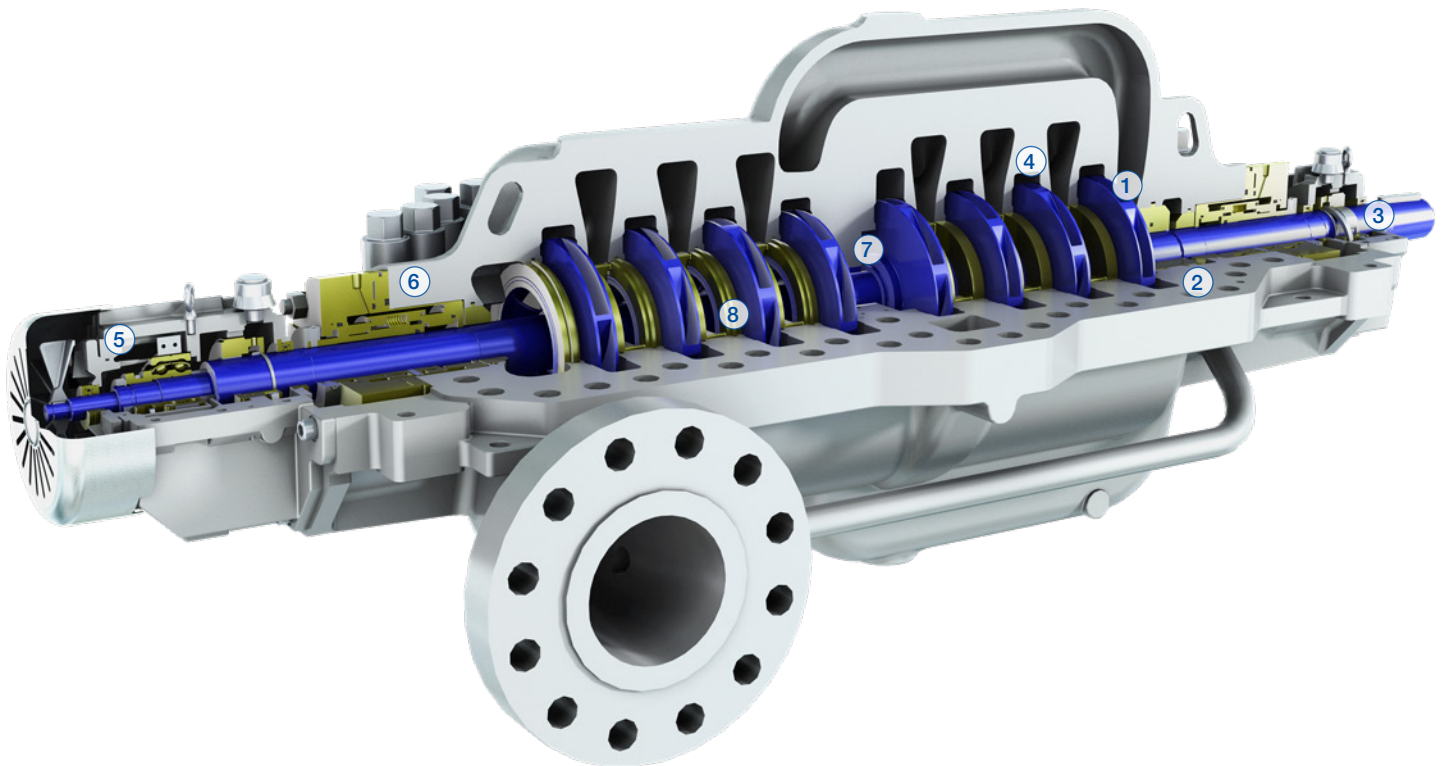
- Easy access for maintenance
- Space for tandem and double mechanical seals
- Compliance with ISO-13709 (API610) dimensions

## 7 Split center bushing

- Facilitates rotor dynamic balance, inspection, removal and replacement

## 8 Replaceable wear rings

- Pinned and axially retained impeller and case wear rings are standard



# Specifications

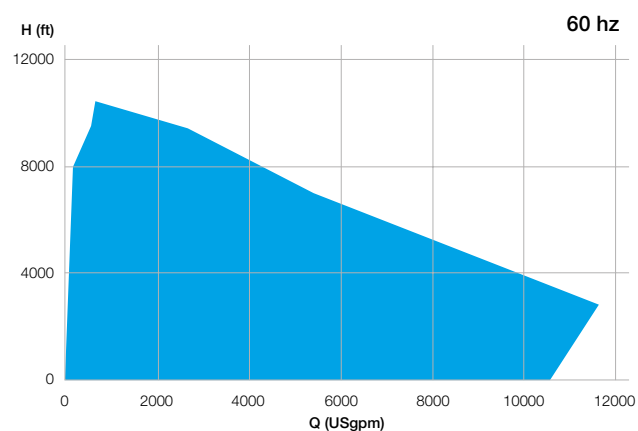
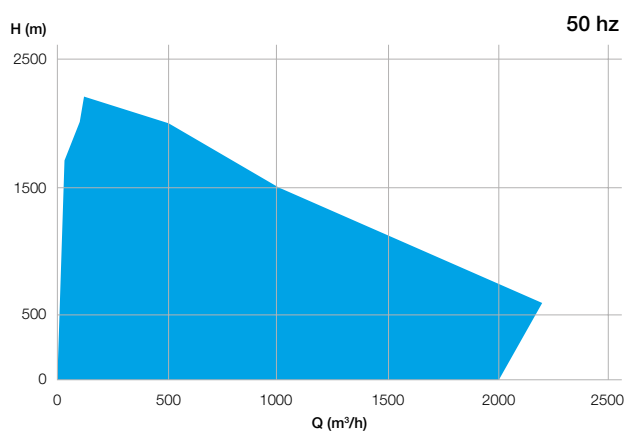
## Material options

API 610 material codes: S-5, S-6, S-8, C-6, A-8, D-1, D-2

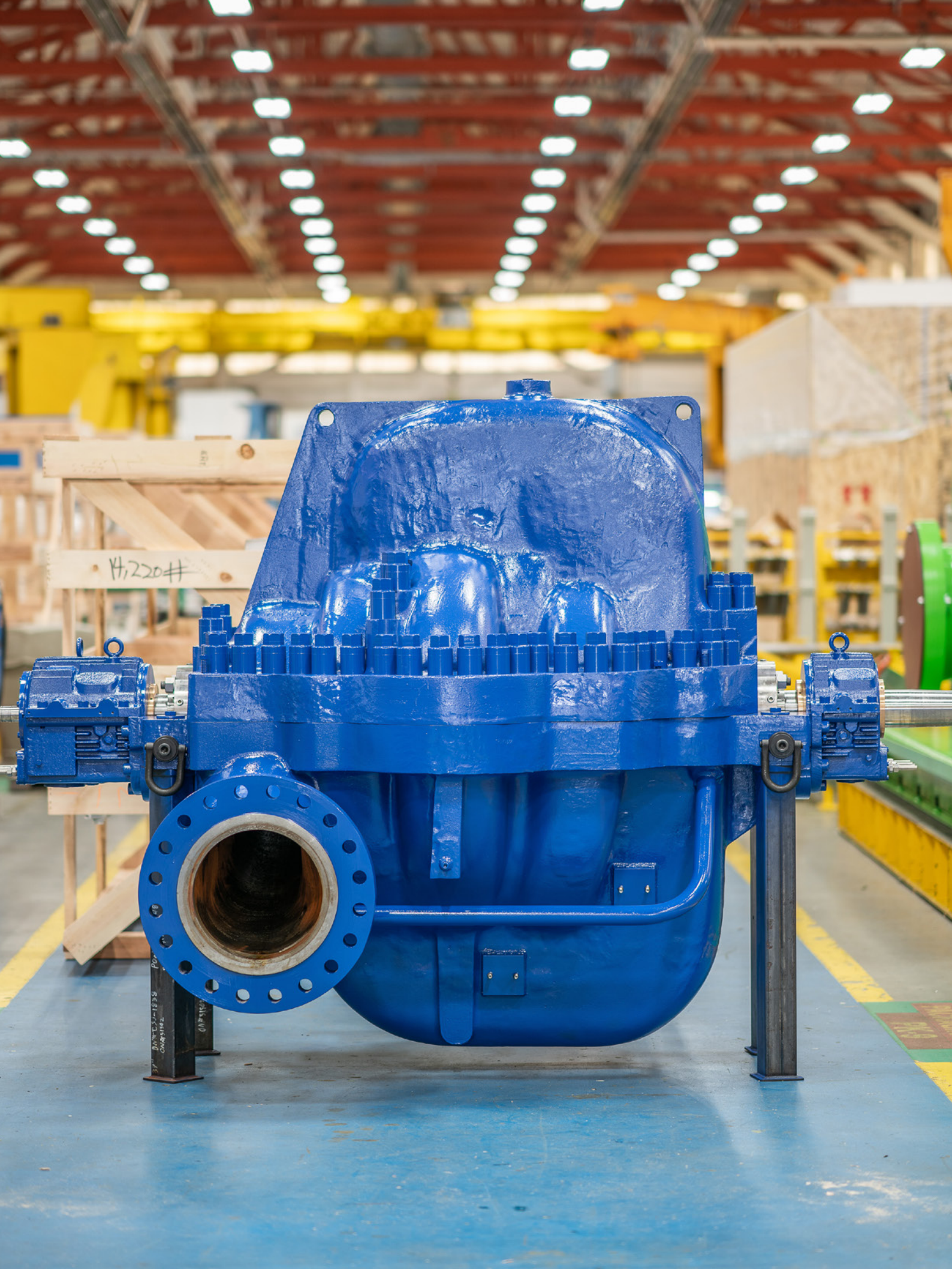
## Operating data

	50 Hz	60 Hz
<b>Pump sizes</b>	80 to 400 mm	3 to 16 in.
<b>Capacities</b>	up to 3'200 m <sup>3</sup> /h	up to 14'000 USgpm
<b>Heads</b>	up to 2'900 m	up to 9'500 ft.
<b>Pressures</b>	up to 300 bar	up to 4'400 psi
<b>Temperatures</b>	up to 205°C	up to 400°F
<b>Max. speed of rotation</b>	over 6'000 rpm	over 6'000 rpm

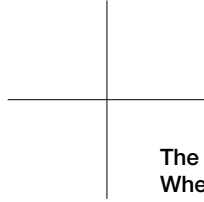
## Performance range











**The Sulzer Flow Equipment division keeps your processes flowing. Wherever fluids are treated, pumped, or mixed, we deliver highly innovative and reliable solutions for the most demanding applications.**

---

The Flow Equipment division specializes in pumping solutions specifically engineered for the processes of our customers. We provide pumps, agitators, compressors, grinders, screens and filters developed through intensive research and development in fluid dynamics and advanced materials. We are a market leader in pumping solutions for water, oil and gas, power, chemicals and most industrial segments.

---

E00577 en 6.2023, Copyright © Sulzer Ltd 2023

This brochure is a general presentation. It does not provide any warranty or guarantee of any kind. Please, contact us for a description of the warranties and guarantees offered with our products. Directions for use and safety will be given separately. All information herein is subject to change without notice.

