

Our commitment,  
your fleet, your choice



# Wishing you a safe journey

Sulzer offers first-class support services to ensure the reliability of your equipment. From research and development for life extension, right through to partial repairs or the full refurbishment and repair of your rail equipment. Together with you, we want to guarantee your equipment's operational cycle.

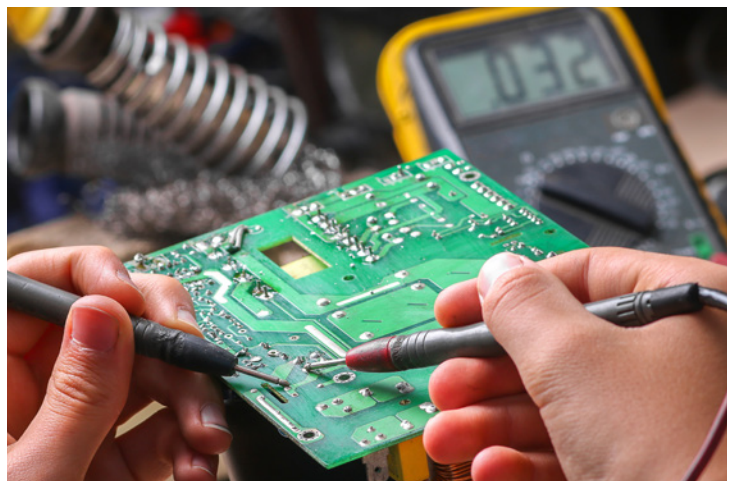
Whatever the size, application and whoever the manufacturer, Sulzer is your service partner.



## Diagnostics and technical support

We believe the on-time delivery of cost effective and quality services is paramount to your success.

Our dedicated team of engineering experts are on hand to help you solve your problem and will offer you advice to predict your operational costs, and enhance the technical criteria to improve the efficiency of your equipment.



## Mechanical services

Our service network has the capacity and capability to carry out any machining process.

Services include:

- Turning
- Boring
- Milling and slotting (CNC)
- Grinding
- Pressing
- Surface engineering
- Dynamic balancing of wheelset and mechanical components
- Alignment
- Full welding capability
- Thermal metal spraying
- On-site services
- New commutator manufacture and repair

## Bogie repairs

In support of regular maintenance programs, designed to ensure the highest levels of rail safety, Sulzer supports you with the repair and refurbishment of bogie frames.

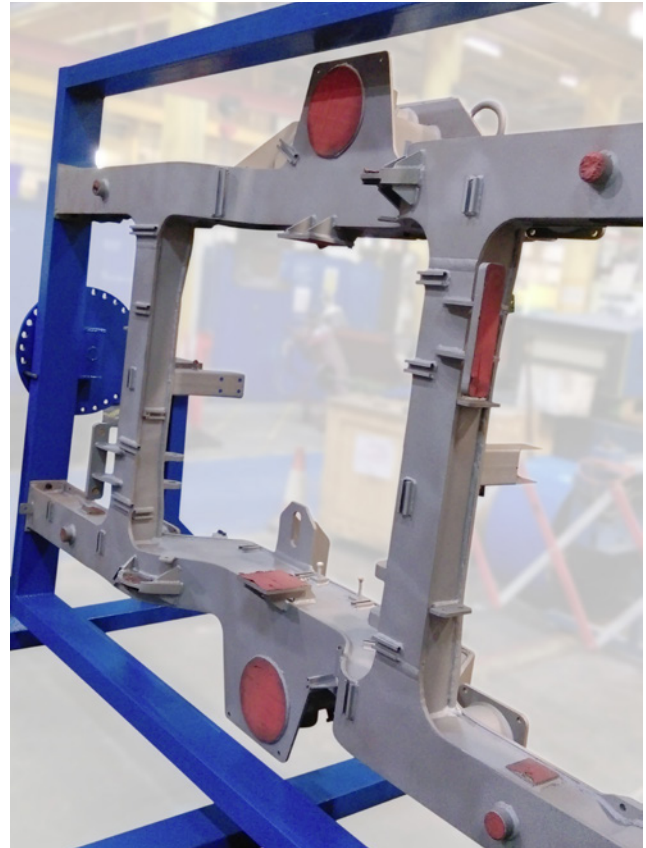
Quality is of the highest importance, therefore we work in partnership to develop proven processes.

You access:

- Life extension / passing exams
- Bespoke repair schedules
- Design and development of repair jigs and tooling
- Periodic, detailed inspections
- Mechanical expertise
- Process cleaning and shot-blasting
- Dimensional checks
- Procedures developed to tackle twist
- Non-destructive testing
- Magnetic particle inspections
- Liquid penetrative inspections
- Qualified welding procedures with coded specialists
- Machining of suspension pads and in-situ services
- Solutions for bogies beyond economic repair
- Quality assurance
- Detailed reporting with photography
- Painting to customer specification
- RISQS certification - ID 1858

## Reverse engineering

Sulzer offers extensive reverse engineering services using measuring arms and positive material identification (PMI) equipment.





## Electrical repair services

Established globally with over 100 years of experience, Sulzer is a market leader in repairs and modifications of motors, generators and electrical equipment.

We support you during both scheduled periods and in emergencies, when you are in need a trustworthy service to keep your wheels in motion.



## Rail systems

We know how important it is to you that your rail operations are kept running on-time and as efficiently as possible.

There are a number of onboard systems that we can support you with including the repair and maintenance of: heating and ventilation, power systems, propulsion and their controls, as well as pumping systems that keep fresh water and waste water flowing as it should.

With a range of in-house expertise, Sulzer's engineers support you with routine maintenance, fault-finding, problem solving, research and development to support the design of bespoke solutions.

## Testing

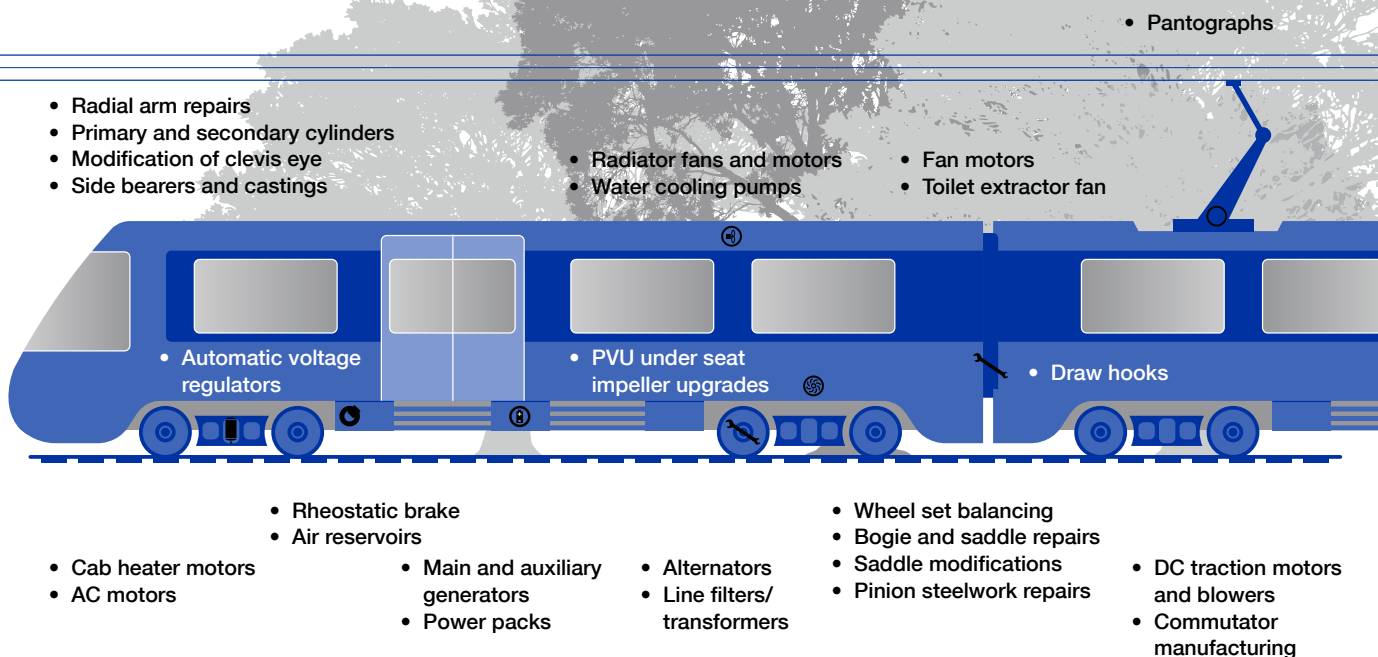
To ensure your equipment is fit for purpose we test all components to a minimum of the rail industry standards and specifications, but often exceed these. At Sulzer, we pride ourselves in giving you the fullest confidence in the quality of the repair you receive.

Sulzer provide a full suite of testing capabilities, tailored to meet your requirements.

# Network of service centers



Please contact your service partner for tenders and contract management:  
**service-rail@sulzer.com**





[www.sulzer.com](http://www.sulzer.com)

E10575 en 1.2019, Copyright © Sulzer Ltd 2019  
This brochure is a general presentation. It does not provide any warranty or guarantee of any kind. Please, contact us for a description of the warranties and guarantees offered with our products. Directions for use and safety will be given separately. All information herein is subject to change without notice.